



since-2016

Asia Zawgyi Travel, DMC
Uninterrupted Services

YANGON - GOLDEN ROCK - BAGO 14 DAYS 13 NIGHTS **INLE - MANDALAY - BAGAN - YANGON**

DAY - 1 YANGON (Arrival)

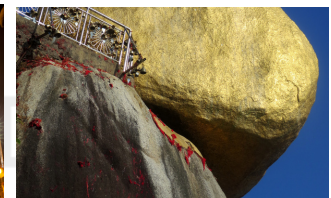
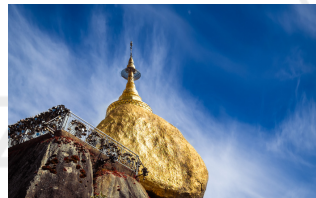
Welcome Dinner



Welcome at **Shwedagon Pagoda**; guide will bring you all around the pagoda and explain interesting historical, traditional and cultural facts. Then visit to **Bogyoke Aung San (Our National Hero, Martyr of Myanmar Independence) Museum**; you can know about his life and struggle for our independence or **National Museum, Yangon**; you can see and know about Myanmar history from pre-historic to modern period, and the major exhibition is the **Royal Throne** of our the last king Thebaw. **Hotel in Yangon.**

DAY - 2 YANGON-GOLDEN ROCK

Breakfast



At the early morning, we will depart to Golden Rock. Coach will stop at rest camp on the way for lunch and dinner at Golden Rock.
Overnight at **Hotel in Golden Rock.**

DAY - 3 GOLDEN ROCK - BAGO - Yangon

Breakfast



After the breakfast, check-out from Hotel and drive to Bago City. Visit to **Bogo Reclining Buddha Image, Shwemawdaw Pagoda**; the highest Pagoda in Myanmar, and **Victory Ground of King Bayint Naung**. After that drive arrive to Yangon about 16:00. Join the **Gala Dinner** at Hotel at 17:00 and overnight at **Hotel in Yangon.**

DAY - 4 YANGON - Inle

Breakfast, Lunch



Depart from Yangon International Airport to Inle with Air KBZ at 08:00 and arrive Heho Airport at 09:15. Check-in at Inle Hotel and rest for a while. Upon reaching the edges of Inle Lake, board a private motorboat and head out to Inle Lake, one of Myanmar's most spectacular sights. Pass villages built on stilts over the lake, inhabited by local Intha people. Observe the famous leg-rowing fishermen and see their floating gardens built up from strips of water hyacinth and mud and anchored to the bottom with bamboo poles. Visit **Phaung Daw Oo Pagoda**, the lake's main sanctuary, which contains five sacred Buddha images covered in gold leaf. **Overnight at Hotel in Inle.**

DAY - 5 Indein

Breakfast, Lunch



This morning the sightseeing begins at 08:00.

Visit the lake's bustling morning market for unique insight into the local cultures of the area. The market rotates its location every day in 5-day cycles. Villagers from the surrounding hill tribes come to the market to sell and trade their wares - making it the perfect place to witness the uniquely diverse population of people in Inle Lake's surrounding areas all in the same place. (Note: the market is daily except on dark moon day and full moon day).

From the middle of the lake, continue down a small canal leading to the village of **Indein**. Explore the area on foot and wander through the beautiful Alaung Sitthou area. From here, climb the covered stairway to the top of a hill covered with picturesque ancient stupas. Enjoy magnificent views of the lake below from this vantage point.

After enjoying the visit to Indein, return to the boat. Continue along the lake for additional sightseeing before returning to the hotel in the afternoon. **Overnight Inle Lake.**

DAY - 6 INLE - Mandalay

Breakfast



We will depart from Inle after breakfast at hotel. Today we will arrange by land transportation from Inle to Mandalay. On the way we can visit to famous circular train bridge, **Kalaw city, Railway station** and enjoy other beautiful scenics. Driving hours may take about 6 hours. Checkin at hotel and Dinner at Hotel host by Asia Zawgyi Travels. **Overnight at Mandalay Hotel.**

DAY - 7 Mandalay

Breakfast



This morning the tour starts at 08:00.

Depart for an excursion to the outskirts of Mandalay to explore the former capitals of Ava, Sagaing, and Amarapura.

First, cross a bridge over the Irrawaddy River to Sagaing. Covered with 600 white-painted pagodas and monasteries, **Sagaing Hill** is widely regarded as the religious center of Myanmar. It is home to more than 3,000 monks and 100 meditation centers. Visit **Swan Oo Pon Nya Shin and U Min Thone Sae Pagodas** for a glimpse into the unique environment of this area.

Then, pay a visit to Sagaing's local market, a typical Burmese market that few tourists frequent. Discover a range of items for sale including locally made pottery, silver, and other handicrafts. Also stop at a small pottery village to see the process of making the ubiquitous water pots found throughout Myanmar.

Then continue south of the city to **Ava**, Myanmar's capital from 14th to 18th centuries. A short ferry ride across the river drops off at the station where a horse and carriage will be waiting. Visit the old wooden **Bagaya Monastery** and the remains of the **Royal Palace and Fort**. There are many small villages located amid Ava's ruins as well. Travelling by horse and cart is the perfect way to witness the unique local life in this rural area.

On the way back to Mandalay, stop at **Amarapura**, a former capital whose name means 'City of Immortality'. First visit a silk weaving workshop which produces exquisite handmade products. After touring this tranquil site, continue to the **iconic U Bein Bridge**. The bridge was constructed from 984 teak posts that were once part of the deserted Inwa Palace and is 1.2 kilometers in length -making it the world's longest teakwood construction. Enjoy a stroll along the bridge and the fabulous views of the surrounding lake and farms.

Return to Mandalay and **overnight at Mandalay Hotel**.

DAY - 8 MANDALAY - Mingun

Breakfast



Transfer to the Mandalay jetty and board a private local boat for a 1-hr cruise on the Irrawaddy River to Mingun.

Visit the main sites of Mingun beginning with the famous **Mingun Pahtodawgyi**. This huge brick structure was left unfinished after an astrologer predicted the King would die should the temple be completed. In the 1800s, an earthquake left several large cracks in the structure. Continue on to the beautiful **Hsinbyume Pagoda**, whose distinctive style is meant to resemble the mythical Mount Meru. Then, see the Mingun Bell which, weighing in at more than 90 tons, is considered the world's largest uncracked ringing bell.

Return to Mandalay by boat and enjoy lunch at a local restaurant.

Next, visit **Mahamuni Pagoda**. This pagoda is home to one of the country's most revered Buddha image which, over the years, has been covered with metres of gold leaf, giving it a distinct 'lumpy' texture. This is the perfect place to witness Burmese culture in action, as a great number of locals come to pay their respects and earn merit.

Mandalay is well-known for its skilled craftsmen. After Mahamuni Pagoda, tour some of the city's traditional workshops, and learn about the city's unique cottage industry.

Observe the production of wood carvings, kalaga tapestries, and gold-leaf using techniques that have remained unchanged for centuries.

OPTIONAL ACTIVITY: Make a marionette- Join local craftsmen at their workshop and create a unique traditional puppet. A hands-on way to learn about the local culture and create a memorable, personalized souvenir!

Continue the tour of Mandalay with a visit to **Kuthodaw Pagoda**, whose 729 marble stone slabs of Buddhist scriptures have earned it the title being home to the 'World's Biggest Book'. Continue to **Shwenandaw Monastery**, the only remaining building from the 19th century **Royal Palace**. This grand teakwood building is known for its exquisite woodcarving. Afterwards, there's an option head to the top of **Mandalay Hill** -the highest point in the city. From this vantage point, get amazing views of the city below as the sun sets.

Overnight in Mandalay.

DAY - 9 MANDALAY - Bagan

Breakfast, Dinner



Our couch will ready at Hotel after breakfast at Hotel then transfer to Bagan. We can see some rural life and beautiful scenic during 5 hours of driving. We will arrive to Bagan at the afternoon and check in at Hotel. Then dinner will serve at Hotel and overnight.

Uninterrupted Services

DAY - 10 BAGAN

Breakfast, Dinner



Today's excursion starts at 08:00 with a visit to a range of sites, providing a great overview of Bagan's history, culture and lifestyles.

The journey begins at an elevated viewpoint with spectacular views over the surrounding plains. This is the perfect introduction to the grandeur and scope of Bagan's architecture.

Next continue to **Ananda Temple**, one of the most revered temples in Bagan and which is quiet in the morning, before all the tour buses arrive.

Afterwards, head to **Myinkaba Village** and **Gubyaukgyi Temple**, the latter of which is noted for the beautiful mural paintings on its inner walls and well-preserved plaster carvings on its exterior. Nearby is **Manuha Temple** and **Nan Paya Temple**, two smaller temples with nice Buddha statues and stone work.

Then learn more about the local culture with a visit to two workshops producing Bagan's most famous products: **lacquerware and wood crafts**. Watch as the skilled craftsmen use techniques passed down through generations to create beautiful items. Take a break for lunch (client's account) and return to the hotel for a short rest, escaping the extreme heat of the midday sun.

Late in the afternoon, take a **relaxing horse cart ride** through the temple area, passing many monuments, farms and traditional houses along the way. Wrap the day up with a stop at an elevated viewpoint for a spectacular sunset over the plains. Afterwards, return back to the hotel.

Overnight in Bagan.

DAY - 11 BAGAN

Breakfast, Dinner



Today there are three options to choose from depending on preferences.

Ballooning over Bagan : Start the morning with an unforgettable hot-air balloon flight over Bagan's temple-studded plains -widely considered to be one of the most iconic experiences in Asia. Pastries, croissants, coffee and tea are provided while the balloon is inflated. Climb aboard before gently rising above thousands of gilded stupas and earthen temples all back-dropped by the impressive Irrawaddy River. Be sure to bring a camera, as this will surely prove to be one of the best photo opportunities of the entire trip. As you eventually drift back to earth, you will be greeted by our dedicated crew, and can celebrate your flight with a glass of chilled sparkling wine, in true aeronautical tradition. Please accept, with our compliments, your own Oriental Ballooning cap and personally-signed flight certificate before we return you to your hotel or guest house. **(Note: available only from late- October to late-March; all flights weather permitting).**

Swe Daw Lay Su Legendary Tour : Discover one of Bagan's most famous legends while following in the footsteps of King Anawrahta and his precious white elephant. By boat, car and jeep, visit four auspicious sites and travel amid rural villages in a journey that brings the legend to life, all while getting an intimate look at Burmese local life.

Excursion to Mount Popa & Salay : Take a break from temple touring in Bagan to visit Mount Popa and Salay. Start with a drive to Chauk and visit a fabulous morning market filled with locals buying and selling their goods. Continue on to the village of Salay, an important Buddhist centre, and visit its famed wooden monastery with intricate carvings. Turn east and head through the countryside to Mount Popa, an extinct volcano which is believed to be home to 'Nats', or ancient Burmese animist spirits. Climb to the top for stunning views of the surrounding countryside before heading back down to Bagan. (Note: Salay monastery museum closed on Mondays, Tuesdays and public holidays)

At the evening we plan to enjoy **Dinner with Puppet** show in Bagan.

Overnight at Bagan Hotel.

DAY - 12 BAGAN

Breakfast



After breakfast at Hotel, our private driver and local tour guide of Zawgyi Travel will pick up you at lobby of hotel. After that drive to **Palin Elephant camp**; the only camp near Bagan where we can see the way they live and join in their bath in the Irrawaddy River. After that we will drive back to Bagan and relax at Hotel for a while.

At the afternoon, we will visit rest of the Pagoda and interesting places around Bagan.

We join **Sunset Cruise Tours** on the Irrawaddy River, cruise on one of these ships will be an unforgettable and unique experience for you. This is also guaranteed by the personal service and support provided by the local crew on board our ships, which, with just five double cabins, make the concept of our premium service, individual river cruise a unique experience for every passenger. We arrange a dinner at Local Restaurant. (Own Account) and **Overnight at Bagan Hotel**.

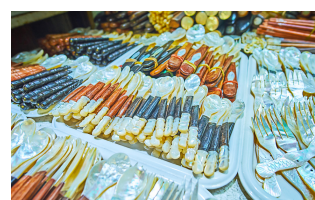
DAY - 13 BAGAN - Yangon



Check out from hotel and transfer to Bagan (Nyaung U) Airport for the flight to Yangon. On arrival, transfer to the hotel for a good night's rest.

Our trip finishes happily in Yangon with lovely recollections.

DAY - 14 YANGON



After the Breakfast, drive back to Yangon. Visit to **Bogyoke Market**; the shoppers' paradise, and at the evening visit to **Shwedagon Pagoda**; the landmark of Myanmar, Today we have some free and flexible time before check-out from hotel at 12:00 noon. Our vacation is happily finish and transfer to Yangon International Airport.

SERVICE INCLUDING

- HOTEL (3 Nights at Yangon **Wyndham Grand Hotel**, 1 Night at Golden Rock **Mountain Top Hotel**, 2 Nights at Inle **Amata Garden Resort**, 3 Nights at Mandalay **Rupamandalar Resort**, 4 Nights at Bagan **Thiripyitsaya Sanctuary Resort** with Twin Share System)
- DOMESTIC FLIGHT (RGN-**HEH** and **NYU**-RGN by Air KBZ)
- TRANSPORTATION (Daily transportation with SUV)
- TRANSFER (River Boat from Mandalay to Mingun, Airport Transfers)
- MEALS (Described in Itinerary)
- Puppet Show
- Sunset Cruise
- Horsecart Riding
- GUIDE (Chinese, English, French, German, Italian, Japanese, Korean, Russian, Spanish, and Thailand)
- Entrance Fees, Zone Fees, Admission Fees and Special Pass (Only for described Itinerary)
- Fruits and Fresh Juices
- Mineral Water and Towels
- Travel Insurance (Only for described Itinerary)

SERVICE EXCLUDING

- International flight ticket
- Services not specified in the itinerary and Service including
- Lunches & Dinners which do not mentioned in itinerary
- Surcharge applied by hotels (mostly beach resorts) during end of the year festive season,
- Surcharge applied (mostly beach resorts during end of the year festive season) & supplements for compulsory Christmas dinner and New Year Eve dinner applied by some hotels during the Festive Period
- Visa Fees, COVID-19 Test Fees, Health Insurance & International Air Route
- All expenditures of personal nature & Camera Fees, drinks and tips
- Service & Destination which is not mentioned
- Credit card fees (2-3%) or bank transfer fees for non-cash payments

FLIGHT SCHEDULE

- 10 JAN 24 RGN - HEH K7-846 08:00-09:15 ATR 72-212A 68Y
- 19 JAN 24 NYU - RGN K7-212 08:45-11:05 ATR 72-212A 68Y

Tax Policy :

Above rate include 10% service charges and 5% government tax. This quotation is valid for a period of 20 days from the date of issue.

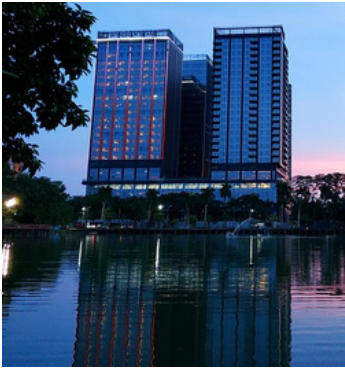
Payment Terms :

Once we have received your confirmation to proceed.

- To confirm the booking and secure the confirmation, 70% of nonrefundable deposit is required 60 days prior to arrival date.
- All the payment shall be paid 30 days prior arrival date.
- Bank charges to be borne by client for any bank transfer.

Cancellation Policy :

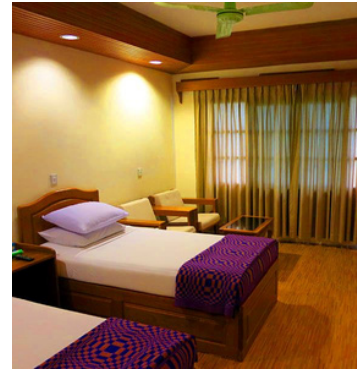
- Cancellation from 30 days prior to arrival date will be charge 100% of the total amount of the entire booking.
- No-Show charges 100% of the total amount of the entire booking.



Wyndham Grand Hotel, Yangon



Mountain Top Hotel, Golden Rock



Amata Garden Resort, Inle



Rupar Mandalar Resort



Thiripyitsaya Sanctuary Resort



**Itinerary may change without prior notice
depend on international and domestic flight schedule**

Asia Zawgyi Travel, DMC

+95 9 942 469 225, +95 9 695 541 926

info@asiazawgyitravels.com, salesasiazawgyitravels@gmail.com

www.asiazawgyitravels.com

